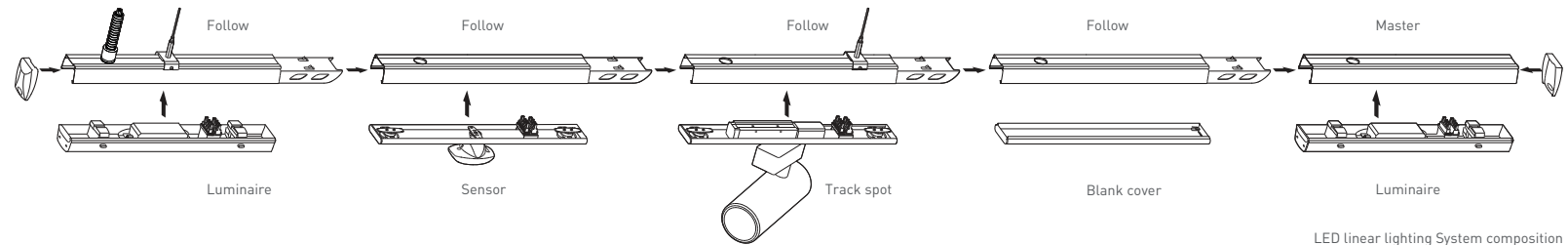


WEEE Number: 80133970

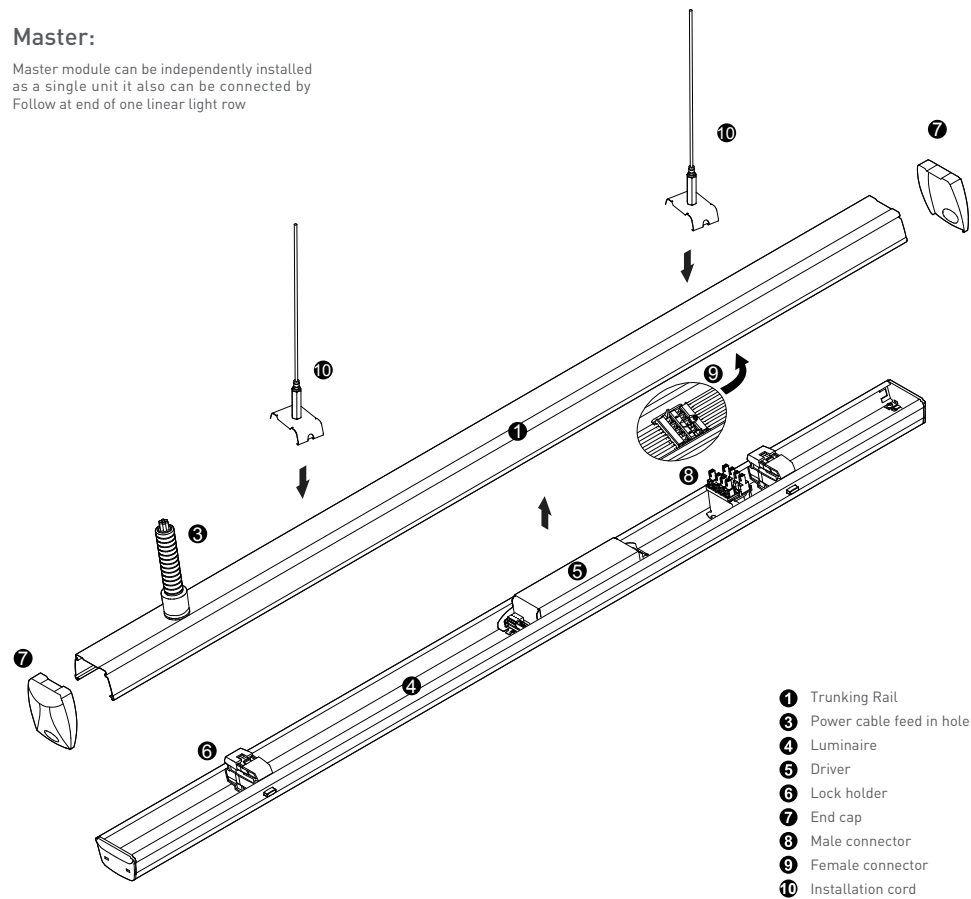
Safety notes:
Installation should be performed only by qualified electrician .

- Make sure no voltage while installation .
- Connect cable wires according to wire labeling.
- Max current should not exceed 16A in one power feed in circuit.

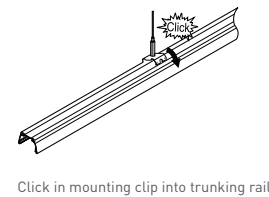
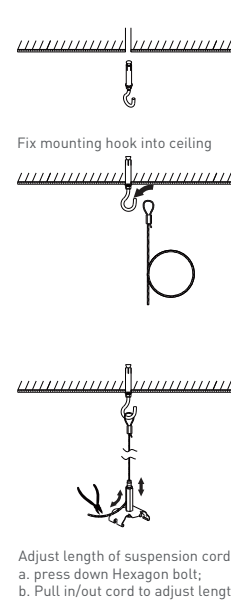


Master:

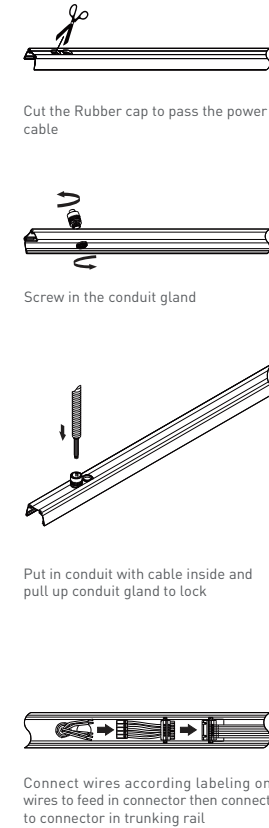
Master module can be independently installed as a single unit it also can be connected by Follow at end of one linear light row



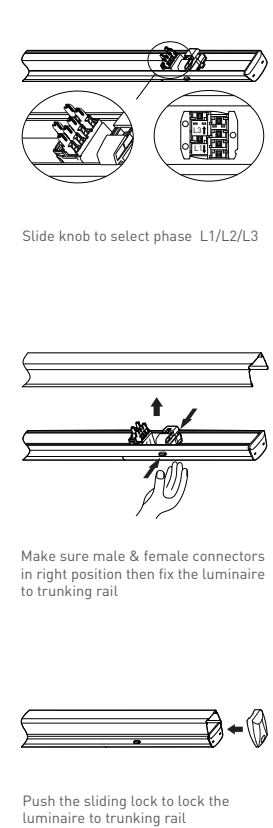
Step 1 Mounting Suspension



Step 2 Connecting Power Supply



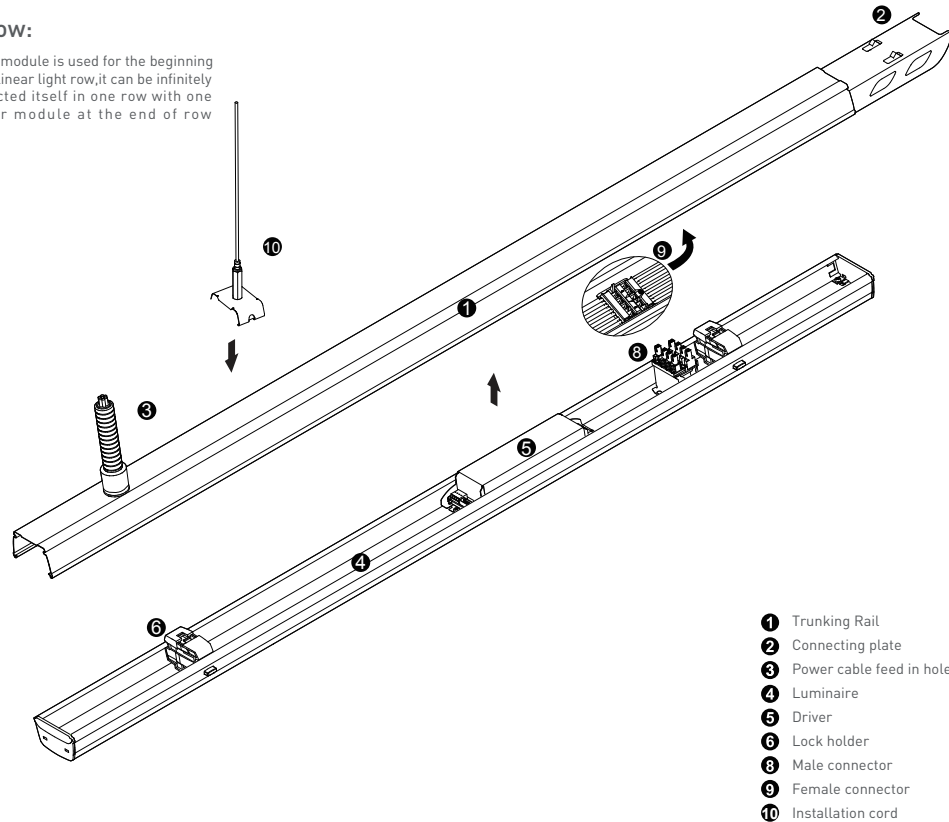
Step 3 Mounting Luminaire



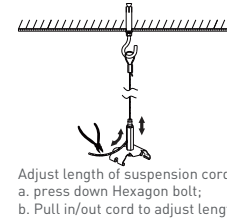
WEEE Number: 80133970

Follow:

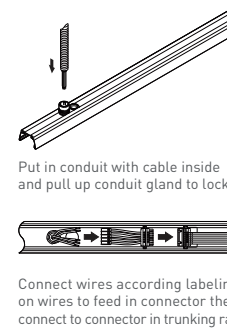
Follow module is used for the beginning of one linear light row, it can be infinitely connected itself in one row with one Master module at the end of row



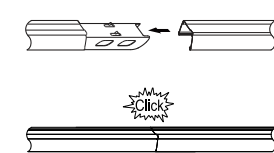
Step 1 Mounting Suspension



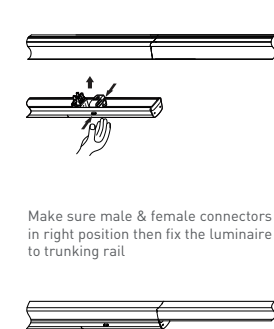
Step 2 Connecting Power Supply



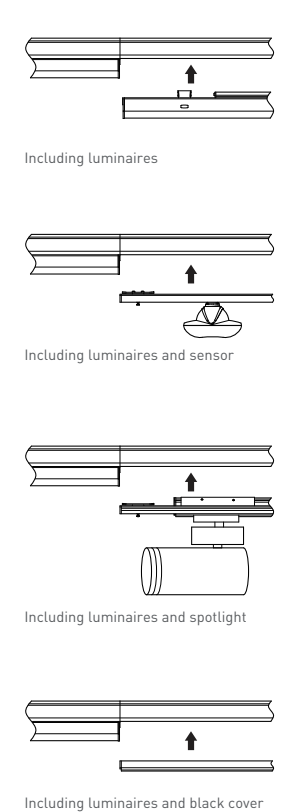
Step 3 Connecting Trunking Rail



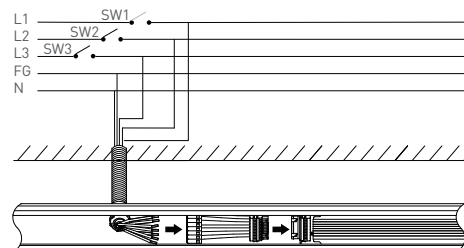
Step 4 Mounting Luminaire



Step 5 LED linear lighting system



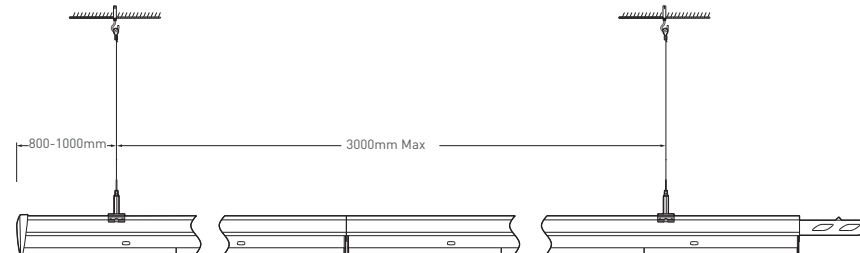
Wire diagram of triple circuits function



This Triple Circuits function offers to control lighting ON/OFF by three switches SW1, SW2, SW3 which are connected by live lines L1, L2, L3

Pendant and mounting installation

Starting Installation distances point should be 800 mm to 1000 mm, then in between 1st & 2nd point should be 3000 mm max



Four options for installation

